

Symphony Hall ~ Springfield, MA

Welcome to SYMPHONY HALL

Location: 34 Court Street, Springfield, MA 01103
Opening Date: 1912; rededication in 1980
Facility Size: 2611 seats
(1779 in the Orchestra and Grand Tier, 832 in the Balcony)

Symphony Hall, as part of Springfield's Municipal Group, is triumphant architecture in the heart of the city. Originally called Municipal Auditorium, was extensively refurbished and reopened in 1980 as Symphony Hall. The building interior was renovated in 2004 with newly upholstered seats, new soft goods, new carpet and additional restrooms. In 2020-2021 another theatrical renovation was completed, including a new sound and lighting system. In addition, all the dressing room and dressing room restrooms were updated with new floor, paint, counters, lighting and showers. It is perceived and operated as a civic treasure.

FEATURES AND CAPABILITIES

STAGE

Dimensions :

| | |
|--|--|
| Depth | 38 ft. 4in. |
| Stage Depth from Upstage edge of Smoke Pocket | 18 ft. 6 in. to Back Wall Riser 20 ft. 2 in. to Back Wall |
| Height of Proscenium | 37 ft. 5 in. |
| Width at Proscenium | 57ft. 5 in. |
| Apron Depth from Upstage of Smoke Pocket | 8 ft. 8 in. |
| Depth to Curtain | 17 ft. |
| Depth of Pit Elevator | 10 ft. 10 in. @center (tapers off to 5 ft. 8 in. SR and SL) |
| Width of Pit Elevator | 59 ft. 11 in |
| Travel of Pit Elevator | 17 ft. down from stage level |
| Height to Grid | 45 ft. 8 in |
| Center Line to Stage Left Nearest Obstruction | 36 ft. |
| Center Line to Stage Right Nearest Obstruction | 36 ft. |
| Center Line to Stage Right Pin Rail | 27 ft. 9 in. |

Stage Floor Construction:

Brazilian Cherry on Creepers. There are no traps in the stage.

Obstructions:

There are four false wall units that must remain on stage. These units marry together and store in off-stage areas. They are 32 ft. high x 7 ft. wide x 10 ft. deep.

Symphony Hall ~ Springfield, MA

The side balconies (Loge) meet the Proscenium wall at sections Loge 8 and Loge 9.

Crossover:

There is a crossover located on the lower level (basement/dressing room area).

Backstage entrances:

Stairs lead up to the stage from the lower level and stage door on both stage right and stage left. Entrances can be made from the wings, or through a door leading onto the apron on stage left.

There are removable stair pieces in house, which can be place house left and right for access into the Orchestra.

FLY SYSTEM

Batten:

18 Upstage of House Curtain (65 ft. long on **9 in. centers**)

Lineset 10 is 40 ft. long

2 Upstage of House Curtain (40 ft. long, for orchestra shell)

3 Downstage of House Curtain – 9 ft., 19 ft., 29 ft. from curtain (50 ft. extendible)

First Available Lineset – 2 ft. 4 in. from smoke pocket.

First Lineset to Upstage wall – 16 ft. 2 in. (to back wall riser @ 18ft. 6 in. from smoke pocket)

All pipes are on electric motor winches.

The winches travel from full out to full in at approximately **20 ft./min.**

All Linesets Upstage of the house curtain are controlled from a panel off stage left.

All pipes Downstage of the act curtain are controlled from a panel on the stage left side of the side balcony.

PIPE AND RIGGING

The mechanical linesets are rigged with 3/16 in. wire rope.

The dead haul motors for each pick point are Eurodrive 2HP continuous duty.

Miscellaneous lengths of 1 ½ in. schedule 40 pipe located in dock level storage.

Six (6) 50 lb. Boom bases

Lineset capacity:

Approximately 1,200 lb. working load limit.

Pipe Travel:

3 ft. 6 in. from stage floor to 43 ft. 6 in. from stage floor.

Technical Specifications as of August 2025

Symphony Hall ~ Springfield, MA

Grid Surface:

3 in. steel channel running upstage/downstage
3 in. openings between channel

Wells:

5 ft. 6 in. Left and Right of Center line
16 ft. 6 in. Left and Right of Center Line
27 ft. 6 in. Left and Right of Center Line
No well at Center line
10 in. well opening with 12 in. channel on edge

SOFT GOODS/ SUPPORT EQUIPMENT

Three (3) 12 ft. H x 69 ft. W heavyweight black velour borders
Four pair (8) 30 ft. H x 19 ft. 6 in. W heavyweight black velour legs
One (1) 35 ft. H x 70 ft. W Muslin Cyc (white)
One (1) 38 ft. H x 72 ft. W House Curtain (burgundy, draw)

One (1) 72 ft. one way traveler
One (1) 72 ft. two-way traveler
Eight (8) 25 lb. Sandbags
Twelve (12) single line sheaves
Six (6) 150 ft. lengths of ½ in. rope
One (1) 25' Genie Lift Tower
One (1) 20 ft. Wide front projection screen

The house curtain and teaser are burgundy.
House curtain is a traveler operated by hand winch from stage left.

LIGHTING

Control System:

ETC Gio @5 Console.

House Lights:

Control for house located in control booth and off stage left. House lights are controlled via programmable Paradigm Architectural Controller and can be run via controller or control board.

Dimmers and Patch:

The lighting system contains 286 20 AMP 2P&G dimmers. System is dimmer per circuit with all circuits terminating with (2) two outlets. Dimmers are ETC Sensor 2.4 K. Lighting system also comes with (2) two Gateway Net Nodes for connection to Ethernet or DMX on SL, SR, Grid, Balcony Rail, Orchestra Ceiling and Lighting Control Booth.

Symphony Hall ~ Springfield, MA

Lighting Positions:

Front of house rail position is 92 ft. from the stage at an angle of approximately 35 degrees. The box boom positions are located in the Loge area - there are three positions per side. First box boom is 50 ft. from stage, second is 58 ft. and the third is 68 ft. from stage. The positions have 8 circuits at 20 amps each. **Loge positions are not recommended for use.**

There are three (3) Xenon Super Trouper spotlights located at the rear of the Balcony, approximately 150 ft. from stage.

Intelligent Fixtures

- 16 High End Systems SolaWash 19 – Rep Plot DS of Proscenium
- 15 High End Systems SolaFrame 1000
 - 9 Hung on FOH Balcony Rail
 - 1 Hung on each Box Boom
- 3 Elation Protron 3k Color
- 16 ETC ArcSystem 4 Pendant – Used with Orchestra Shell Ceiling
- 9 ETC ColorSource Cyc

Control

- 1 @ ETC Gio @5
- 29 @ ETC R20 Module
 - 20A constant power module to replace the dimmed power modules currently in your racks. The remaining dimming modules will still be usable
- 1 @ 2-Port DMX Gateway
- 2 @ 4-Port Gateways
 - 1 installed in attic to feed Loges and Orch. Pit pipes
 - 1 Installed backstage to feed 12-port opto
- 1 @ ETC Response Opto
 - 12 port DMX/RDM Opto Splitter
 - Backstage, for tours to access guest universe of DMX

Conventional Fixtures

24 2K Desisti Fresnels

Symphony Hall ~ Springfield, MA

Electrical Service:

2 company switches upstage right 400A 208V 3phase 5 wire CamLoc for vendors needs w/ FA shutdown (Neutral and Ground Turnarounds Available)

Audio

1 Downstage left 100A 208V 3phase 5 Wire CamLoc for Audio Only W/ FA shutdown

3phase 30A 208V 5Wire for Audio Console connection downstage left.

3phase 30A 208V 5Wire for band power w/shutdown down stage left

FOH lower Balcony Left mix position Dante/Guest Network to Downstage left. With 20a 120v audio power.

FOH Lower Balcony Center mix position Dante/Guest Network to Downstage left. With 20a 120v audio power.

Lighting Control Booth mix position Dante/Guest Network to Downstage left. With 20a 120v audio power

House/Production Wifi Network throughout

Ladders:

One (1) Genie Lift – 25' Maximum Platform Height

One (1) 4 ft. fiberglass step ladder

One (1) 8 ft. fiberglass ladder

One (1) 12 ft. fiberglass ladder

Symphony Hall ~ Springfield, MA

AUDIO

****Due to the shape of the theatre and its U-shaped balcony, the audio system in the hall has been designed to interface with all road systems.**

Touring Productions:

DUE TO RIGGING RESTRICTIONS IT IS IMPERATIVE THAT HOUSE ARRAY SYSTEM BE USED BY TOURING PRODUCTIONS !!!!

There is ample space in each wing under the balcony for stacking PA speakers, with a height restriction of 9 ft.

The mix position is located at the rear of the orchestra level with enough room to accommodate a large board such as a Cadac, PM 4000, etc. and all related processing. Cable snakes run from backstage to FOH across the floor and there are no power outlets or signal lines at FOH.

Distance from stage to the sound position at the back of the Orchestra is approximately 75 ft.

FOH Speakers:

- 24 L-Acoustics Kara II flown 12 per side
- 8 L-Acoustics SB18i in cardioid configuration stacked 4 per side
- 6 L-Acoustics X8 front fills
- 6 L-Acoustics X8 under balcony fills
- 4 L-Acoustics A10i balcony fills
- 10 L-Acoustics LA4X amplifiers
- 1 L-Acoustics P1 processor

Input to the system for touring consoles is direct into the P1 at mix position and can be AES or analog, and is configured left, right, sub, front fill.

Signal path is console -> P1 -> amplifiers. There is a laptop with LA Network Manager at FOH.

There are analog inputs to the system on stage left which bypass the P1.

FOH Console:

Yamaha Rivage PM3
Yamaha RIO3224
Yamaha RIO1608

Symphony Hall ~ Springfield, MA

Monitor System Speakers

- 10 L-Acoustics X12 monitor wedges
- 1 L-Acoustics SB18 subwoofer
- 3 L-Acoustics LA4X amplifiers

Monitor Console:

Yamaha Rivage PM3
Yamaha RIO3224
Yamaha RIO1608

Snake

Link 48 channel 3-way transformer isolated split snake with 2 hardwired fanouts for the house RIOs and a 25' fanout for tour consoles or broadcast use.

Portable Sound System:

One (1) MCX-106 TOA, 6 channel mixer with two stands, two 402 speakers. TOA 4 channel input.

**The house does have access to one acoustical shell, white in color.
Arrangements to use this equipment must be made well in advance.

Audio Inventory:

- Two (2) SM58 Shure Microphones
- Four (4) SM91 Shure Microphones
- Nine (9) 25 ft. Microphone Cords
- Six (6) 50 ft. Microphone Cords
- One (1) 50 ft. 12 channel snake
- Three (3) Proco Direct Boxes
- Twelve (12) Microphone Stands
- Four (4) Banquet Microphone Stands
- Two (2) EV 1183 3-Way Speaker Cabinets (Side Fill)
- 8 Channels of Shure ULX-D receivers
- 8 Handheld transmitters with SM58 capsules
- 8 Belt pack transmitters with WL85 lavalier microphones

Symphony Hall ~ Springfield, MA

| |
|------------------------------|
| HEADSET SYSTEM/PAGING |
|------------------------------|

The building is equipped with a ClearCom Headset system with hard wired outlets in all production areas (stage left, stage right, fly position, house sound, house lights, orchestra pit and spots). The main station is located off stage left.

Headset Inventory:

Nine (9) single channel belt packs and Headsets.

Paging System:

There is a full all-area paging system which covers dressing rooms, backstage hallways, as well as the spot booth and the lighting control booth. The system is operated from off stage left.

Symphony Hall ~ Springfield, MA

DRESSING ROOMS

All dressing rooms are located in the basement of the building, two levels below the stage. Equipment can be ramped down from the loading dock or brought down on the Pit Elevator.

Dressing rooms:

Three (3) star dressing rooms with private bathroom, lighted make-up mirrors, monitors, tables and chairs. Each room can accommodate up to four people.

Two (2) Chorus dressing rooms, separated by a curtain. With lighted make-up mirrors, monitors, tables, chairs, coat racks and sink. Each room can accommodate up to twenty-five (25) people. Bathrooms with showers are located adjacent to the dressing rooms and chorus rooms.

SUPPORT SPACES

One (1) Wardrobe/Laundry room on the basement level across from the chorus dressing room. Approximately 20 ft. 10 in. x 13 ft. 9 in. with a double door entrance. Room is equipped with Washer & Dryer

One (1) Production Office stage left on the basement level, approximately 12 ft. 6 in. x 9 ft. 9 in. Wireless and Hardline connection is available.

One (1) Green Room in the basement level, approximately 16 ft. x 16 ft. Equipped with a new kitchenette, full size fridge, sink, microwave and coffee maker.

High Speed Encrypted Wireless Internet access is available on Dressing Room Level as well as the entire building. Please see house personnel for password.

Stage Manager's Position:

There are two stage managers positions – one off stage left with paging, headset, audio and house light controls. The other is located in the control booth at the back of the orchestra level.

TRUCK AND EQUIPMENT LOADING

All equipment is loaded in from Pynchon Street. All trailers must be unloaded on the street and equipment must be pushed down a ramp to the loading door and into the Assembly

Symphony Hall ~ Springfield, MA

Area. Equipment can be staged in the Assembly Area before it is pushed onto the Pit Elevator for transport to the stage. This room is approximately 20 ft. x 38 ft. Cases can be stored in Stage Storage, two levels below the stage.

Dressing room access can be attained via the pit elevator or in house ramp access.

The loading ramp is 11 ft. wide x 21 ft. in length, raked at a 33-degree angle.
Distance from the truck to the Pit Elevator = 70 ft.

Loading Door: **Height – 7 ft. 10 in.**
 Width – 7 ft. 0 in.

UNION

The building has a contract with I.A.T.S.E. Local 53.
The business agent for the local is Michael Afflitto, phone (413) 530-4747

ALL TECHNICAL QUESTIONS PLEASE CONTACT:

Chad LaBumbard,
Technical Director
413 896-7277
Chad@symphonyhallspringfield.com

ATTACHMENTS:

Driving Directions
Hotel Recommendation
Lineset Schedule
Circuit Locations
Pipe & Line Plot
Map of Dressing Room/Production Area
Seating Chart

Symphony Hall ~ Springfield, MA

DIRECTIONS TO SYMPHONY HALL – Stage Door:

If you are traveling NORTH on I-91, take Exit 4 (Broad Street) onto East Columbus Avenue. You will pass the Hall on your right. Take a right onto Boland Way. Take the next right onto Main Street, and the next right again onto East Court Street. You will see a sign on your right for City Hall Place – this is a one-way street; you can only turn right. City Hall becomes Pynchon Street as you round the corner (see attached map). The stage and loading doors are located on Pynchon.

If you are traveling SOUTH on I-91, take Exit 7 (Springfield Center/Columbus Avenue). At the end of the ramp, turn left. Circle under the highway and go straight through one light. The Springfield Sheraton will be on your right. Take a right at the next light onto Main Street, and the next right again onto East Court Street. You will see a sign on your right for City Hall Place – this is a one-way street; you can only turn right. City Hall becomes Pynchon Street as you round the corner (see attached map). The stage and loading doors are located on Pynchon.

If you are traveling WEST on Rte. 90 (Mass Pike), take Exit 6 to Rte. 291. From Rte. 291, take the Dwight Street Exit. Turn left at the end of the ramp and follow Dwight to East Court Street. Take a right onto East Court Street, go through one set of lights (crossing Main Street). You will see a sign on your right for City Hall Place – this is a one-way street; you can only turn right. City Hall becomes Pynchon Street as you round the corner (see attached map). The stage and loading doors are located on Pynchon.

If you are traveling EAST on Rte. 90 (Mass Pike), take Exit 4 onto I-91 South. Follow same directions above for I-91 South.

RECOMMENDED HOTEL

MGM Springfield

1 MGM Way
Springfield, MA 01105
Phone: 413 273-5000
www.mgmpringfield.mgmresorts.com

MGM Springfield Resort is steps away from Springfield Symphony Hall. With the most modern, up-to-date amenities, their 240 rooms satisfy your every need and want. A high-definition TV and highspeed Wi-Fi make it the perfect sanctuary to relax or get down to business. Once you have touched down on the luxurious pillow-topped mattresses, you may never want to leave

Symphony Hall ~ Springfield, MA

Symphony Hall ~ Springfield, MA

| |
|----------------------------|
| GENERAL INFORMATION |
|----------------------------|

Nearest Airport:

Bradley International

Windsor Locks, CT

Phone: 860.292.2000 (for general information/administration)

(38 miles from Springfield, MA – 20 to 30 minutes away, depending on traffic outside of Hartford, CT)

Local Attractions:

The Basketball Hall of Fame, Springfield Armory, Springfield Museums, Yankee Candle Company, Six Flags New England (seasonal), The Big E (seasonal).

Nearest Hospital:

Bay State Medical Center

759 Chestnut Street

Springfield, MA 01199

Phone: 413.794.0000

Symphony Hall ~ Springfield, MA

LINESSET SCHEDULE

All measurements taken from upstage edge of smoke pocket

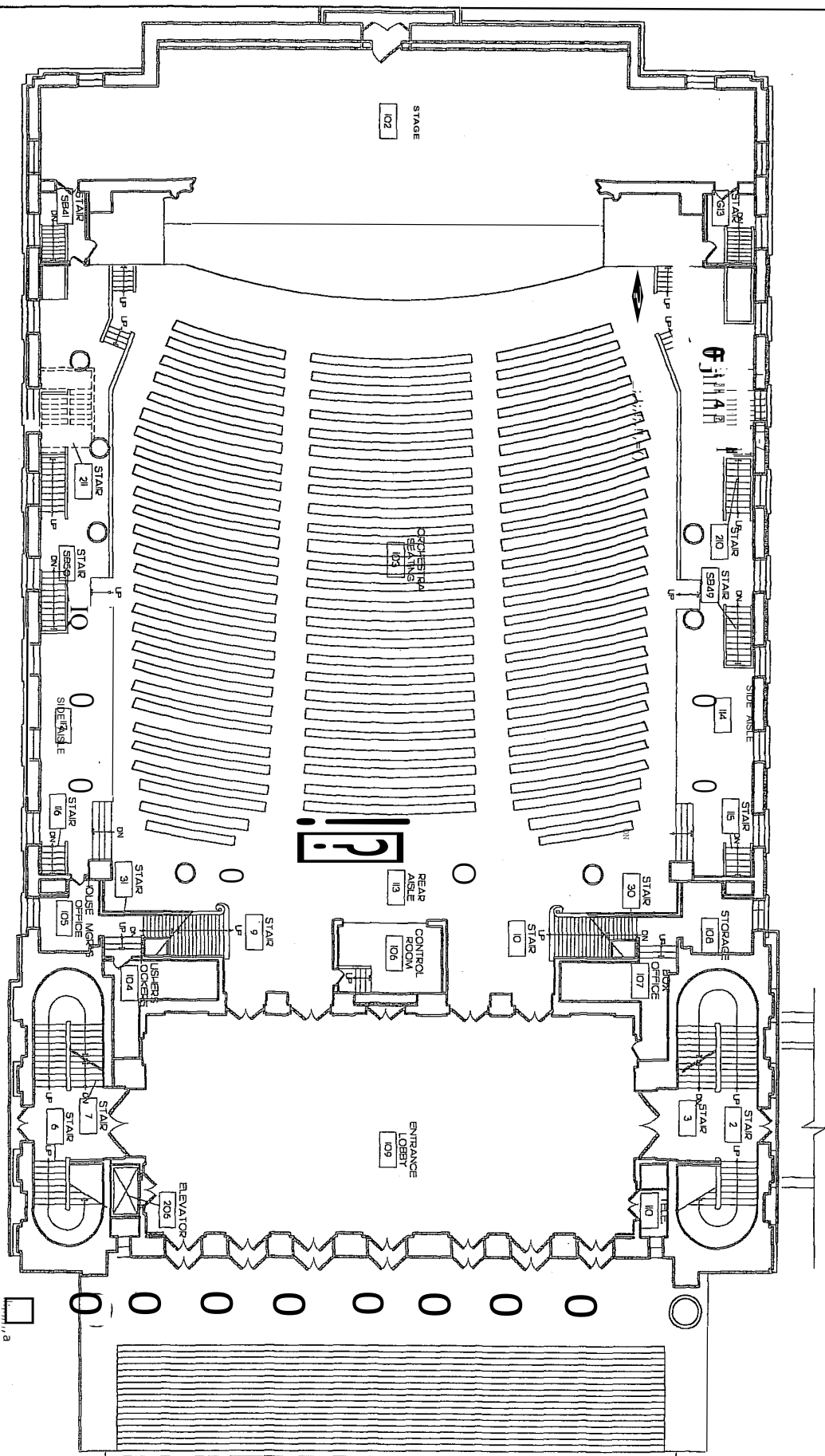
| Distance from smoke pocket | # | Description |
|----------------------------|----|--|
| 29 ft. | F | |
| 19 ft. | E | |
| 9 ft. | C | |
| 0 ft. 9 in. | | House Border (Burgundy) – Manually Operated |
| 1 ft. 3 in. | | House Curtain (Burgundy, traveler) – Hand Winch Operated |
| 2 ft. 4 in. | 1 | |
| 3 ft. 2 in. | 2 | |
| 3 ft. 11 in. | 3 | |
| 4 ft. 10 in. | 4 | |
| 5 ft. 3 in. | B | Orchestra Electric Pipe (4 cables) |
| 5 ft. 8 in. | 5 | |
| 6 ft. 6 in. | 6 | |
| 7 ft. 4 in. | 7 | |
| 8 ft. 2 in. | 8 | |
| 8 ft. 11 in. | 9 | |
| 9 ft. 11 in. | 10 | Only 40' wide pipe!!!! |
| 10 ft. 8 in. | 11 | |
| 11 ft. 6 in. | 12 | |
| 12 ft. 3 in. | 13 | |
| 13 ft. 1 in. | 14 | |
| 14 ft. | 15 | |
| 14 ft. 6 in. | A | Orchestra Electric Pipe (4 cables) |
| 14 ft. 10 in. | 16 | |
| 15 ft. 7 in. | 17 | |
| 16 ft. 6 in. | 18 | |
| 17 ft. 4 in. | 19 | |

Symphony Hall ~ Springfield, MA

| | | |
|---------------------|--------------------------|--------------------------|
| CIRCUIT LOCATIONS | | |
| | | |
| 20 amp circuits: | Stage Pin/Dimmer | Edison/Relay |
| Numbers | Locations | |
| 3-4,7-8,11-12,15-16 | Gallery Rail | 1-2,5-6,9-10,13-14,17-18 |
| 19 -- 20 | Balcony Left Rear | |
| 23 -- 28 | Balcony Boom Left #3 | 21-22 |
| 31 -- 36 | Balcony Boom Left #2 | 29-30 |
| 39 -- 44 | Balcony Boom Left #1 | 37-38 |
| 45 -- 48 | Balcony Left Center | |
| 49 -- 50 | Balcony Right Rear | |
| 53-- 58 | Balcony Boom Right #3 | 51-52 |
| 61 -- 66 | Balcony Boom Right #2 | 59-60 |
| 69 -- 74 | Balcony Boom Right #1 | 67-68 |
| 75 -- 78 | Balcony Right Corner | |
| 79 -- 90 | Ceiling Slot | |
| | Ceiling Pipe F | 103-108 |
| | Ceiling Pipe E | 97-102 |
| 115 – 126 | Ceiling Pipe C | 109-114 |
| 127 – 130 | Orchestra Downlights | 131-134 |
| 135 – 158 | 1 st Electric | |
| 159 – 182 | 2 nd Electric | |
| 183 – 194 | 3 rd Electric | |
| 195 – 204 | 4 th Electric | 205-206 hemp rail |
| 207 – 212 | Apron Left | |
| 213 – 218 | Apron Right | |
| 219 – 230 | Downstage Left | |
| 231 – 242 | Upstage Left | |
| 243 – 245 | Back Wall Left | |

Symphony Hall ~ Springfield, MA

| | | |
|------------------|-----------------------|---------|
| 246, 251 | Back Wall Center | 247-250 |
| 252 – 254 | Back Wall Right | |
| 255 – 266 | Upstage Right | |
| 267 – 278 | Bottom of Patch Panel | |
| 279 – 286 | Orchestra Pit | |
| | | |
| 50 amp circuits: | | |
| Numbers | Locations | |
| 501 – 502 | Balcony Left Rear | |
| 503 – 504 | Balcony Right Rear | |
| 505 – 506 | Upstage Left | |
| 507 – 508 | Upstage Center | |
| 509 – 510 | Upstage Right | |

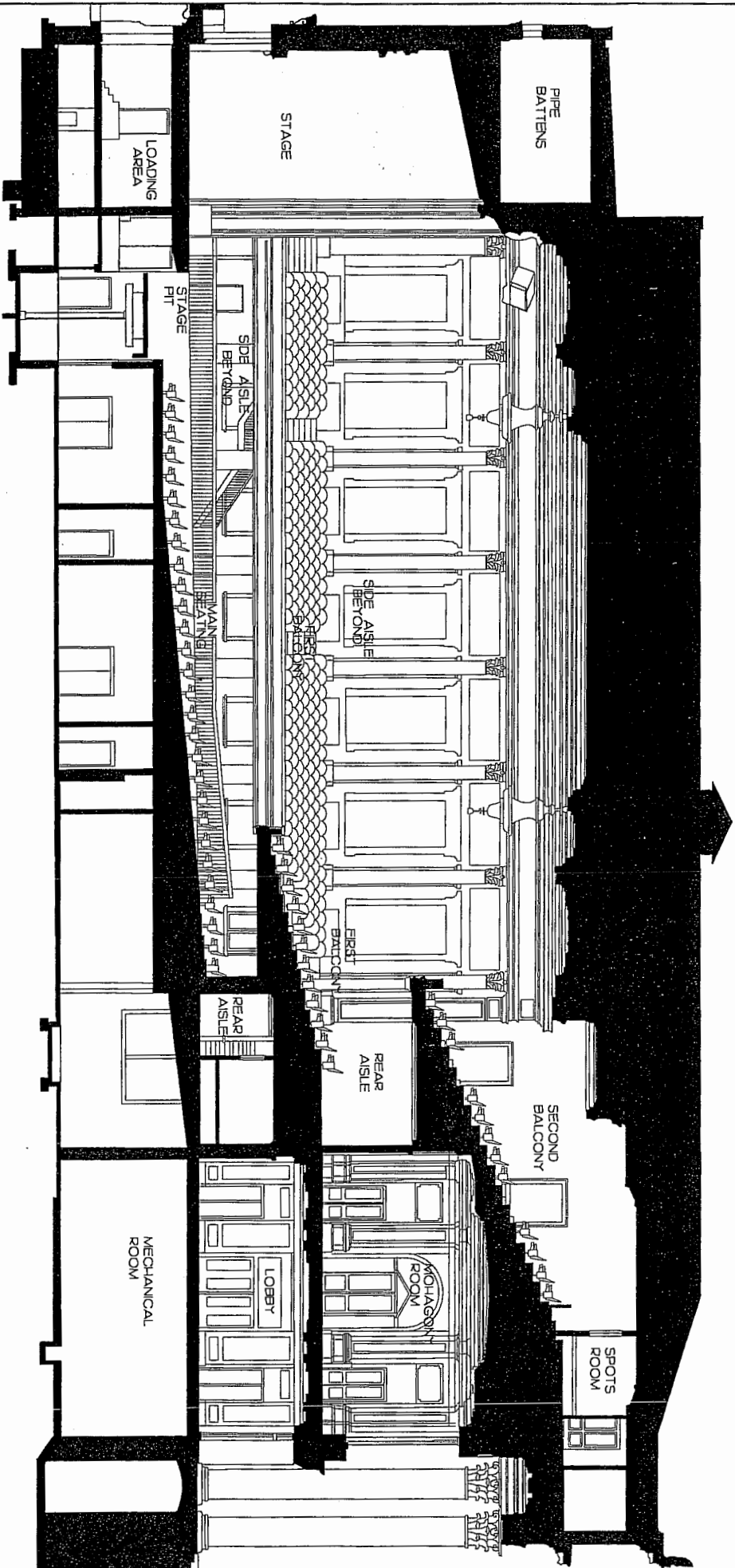


MAIN FLOOR PLAN



SPRINGFIELD SYMPHONY HALL
 SPRINGFIELD, MASSACHUSETTS
 OCTOBER 15, 2001

FINISHED IN
 77 North W
 ST. BOSTON, MA 02114



BUILDING SECTION

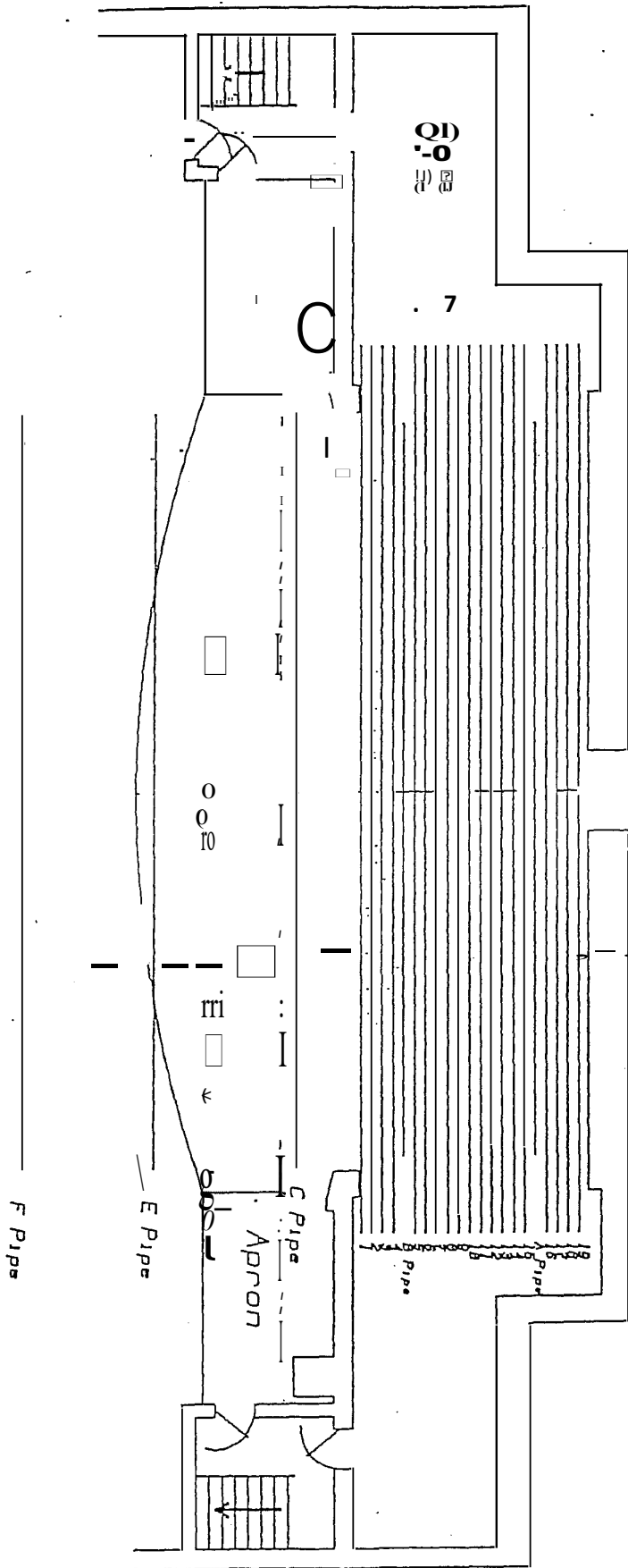


SPRINGFIELD SYMPHONY HALL

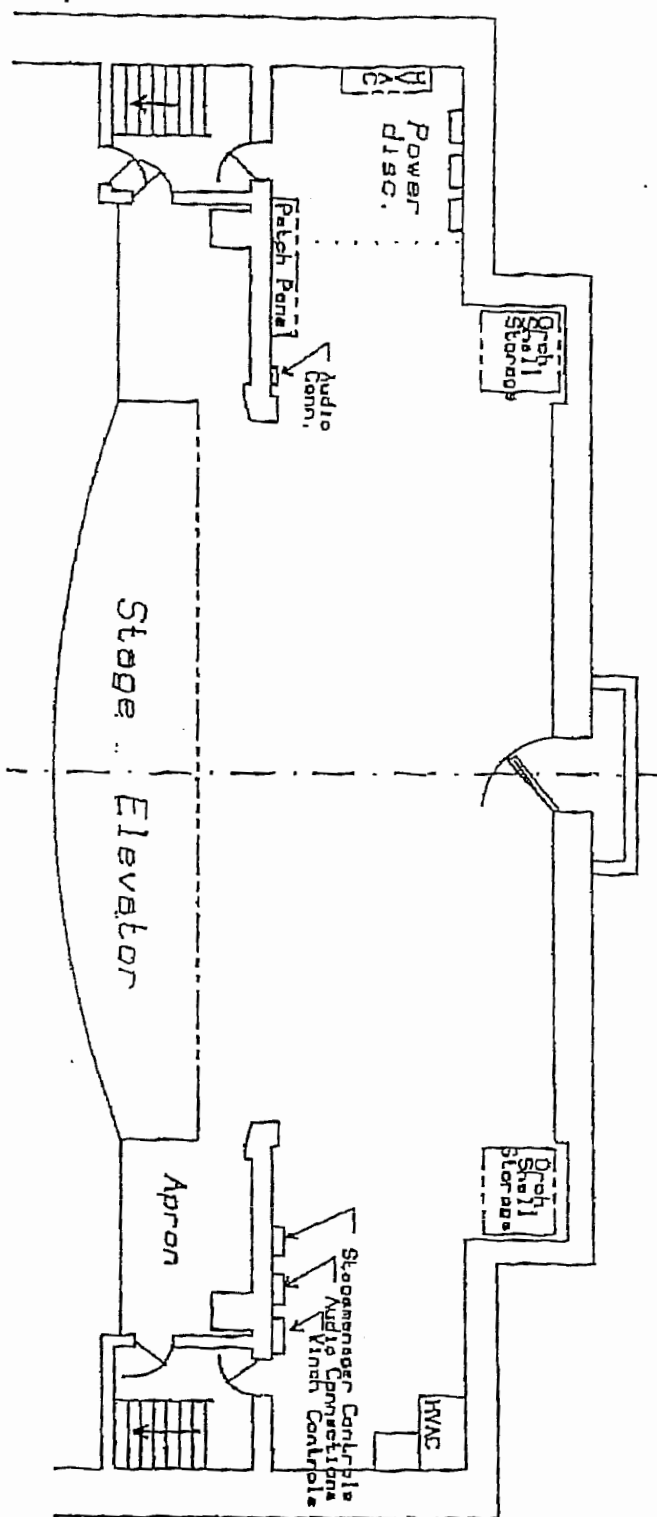
SPRINGFIELD, MASSACHUSETTS
OCTOBER 15, 2001

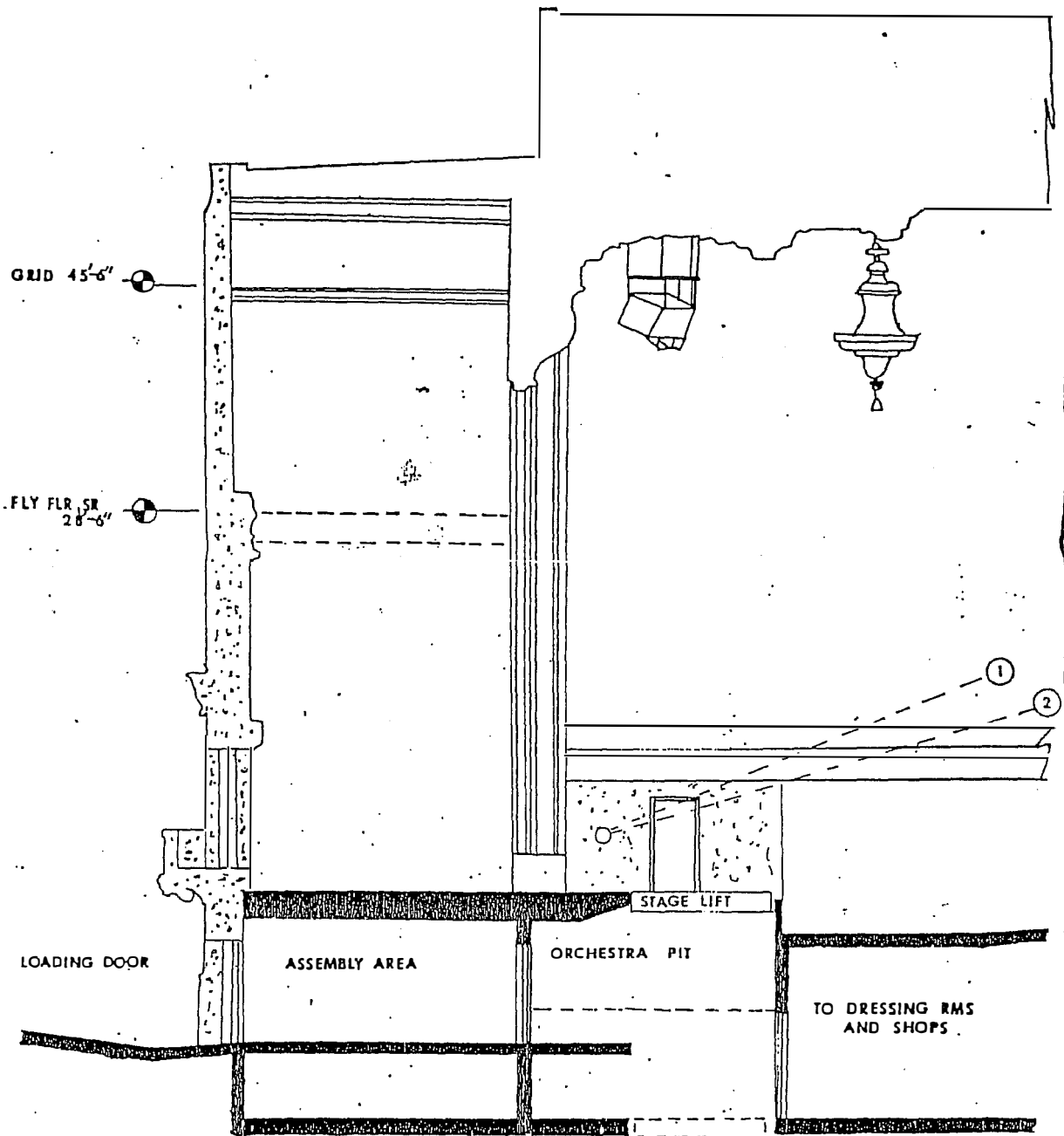
ENEGOLD ALEXANDER + ASSOCIATES INC.
77 North Washington St.
Boston MA 02114

(J)
 1C
 3
 u
 CD
 J-
 o
 J
 u
 J-
 t
 n



Symphony Hall



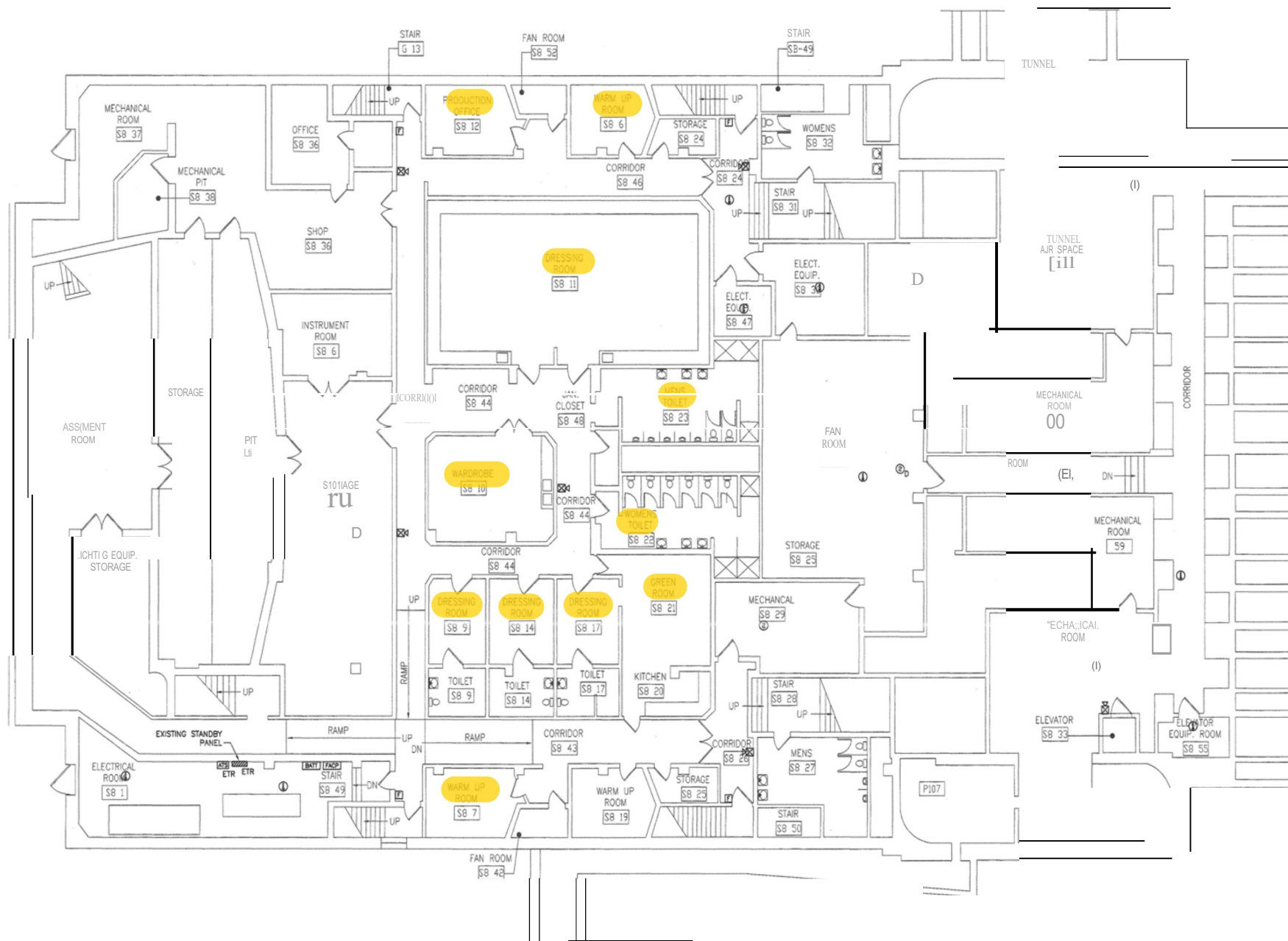


- ① SPOT BOOTH - 148'
- ② BALCONY RAIL - 92'

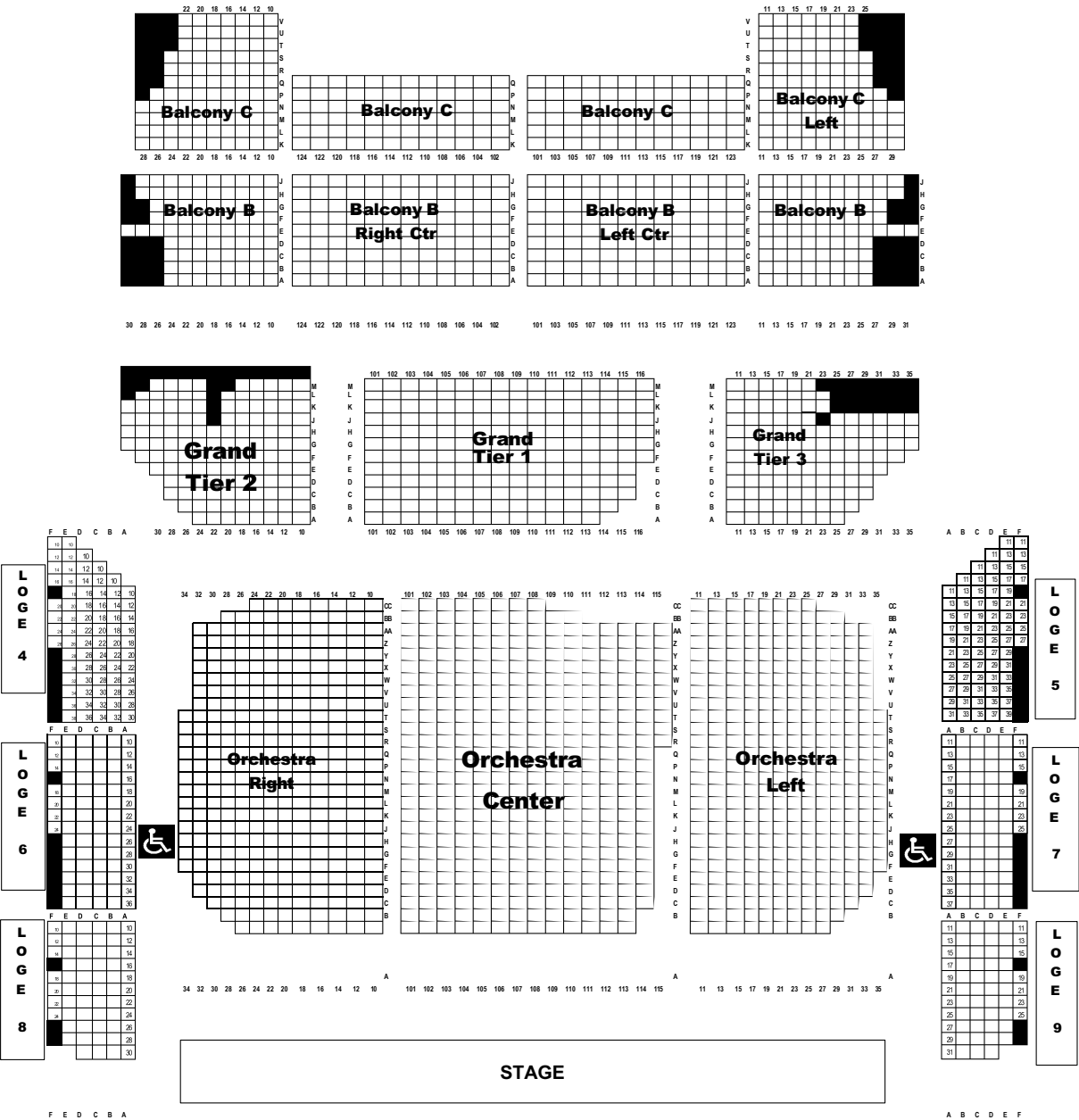
The Center

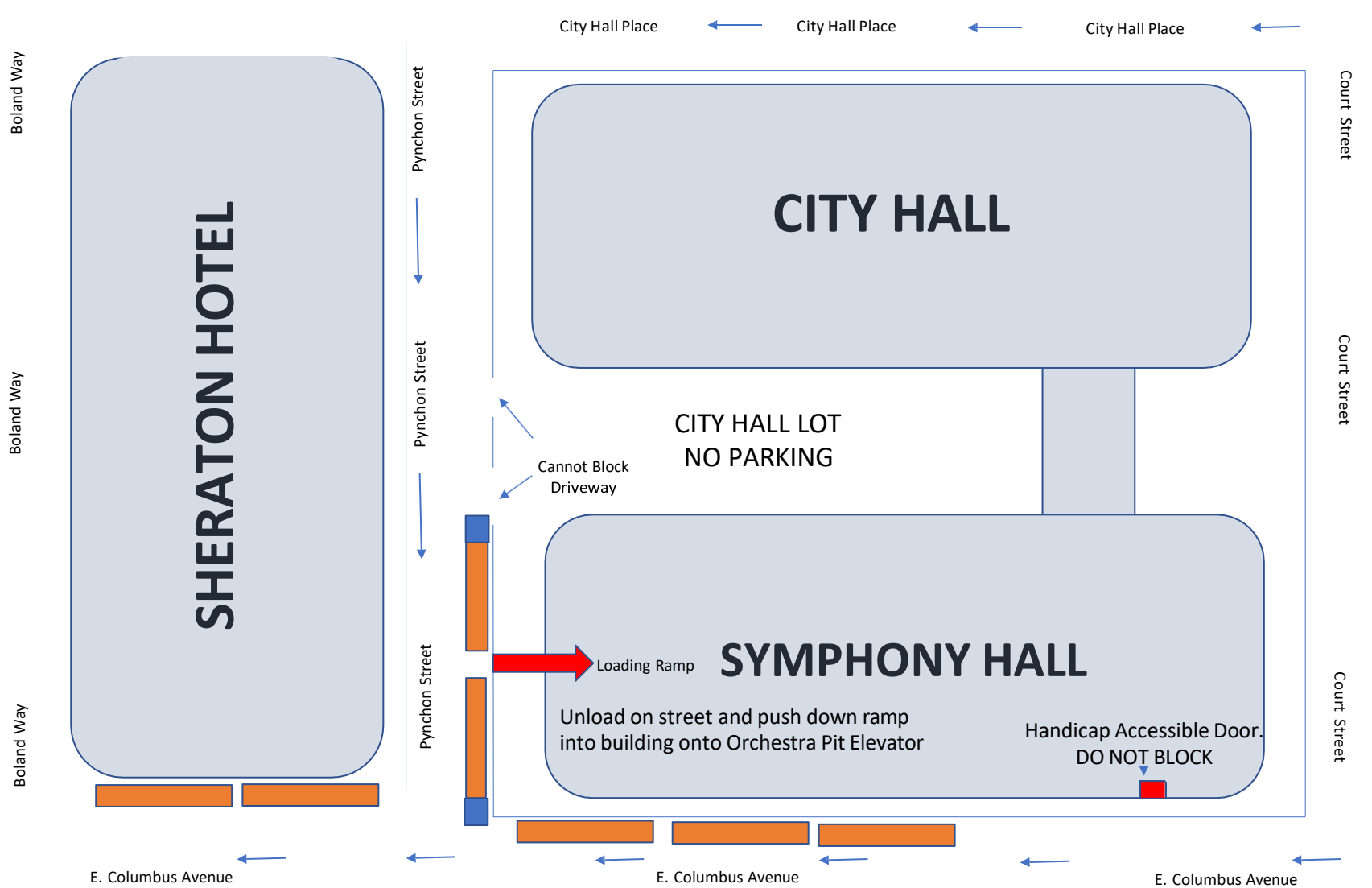
Symphony hall

SCALE: 1/8" = 1'-0"



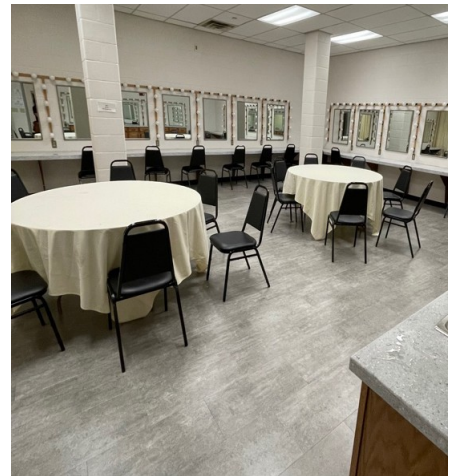
Symphony Hall Seating Chart





Dressing room inventory:

- 2 – White Chairs and end tables
- 4 – Black couches
- 50 - Black chairs
- 4 - Long mirrors
- 2 – 60” Round banquet tables
- 5 – 8 ft tables
- 1– Ironing board
- 1-Iron
- 1 – Clothing steamer
- Washer & Dryer
- Rolling clothing racks
- 1 – Full sized Ice maker

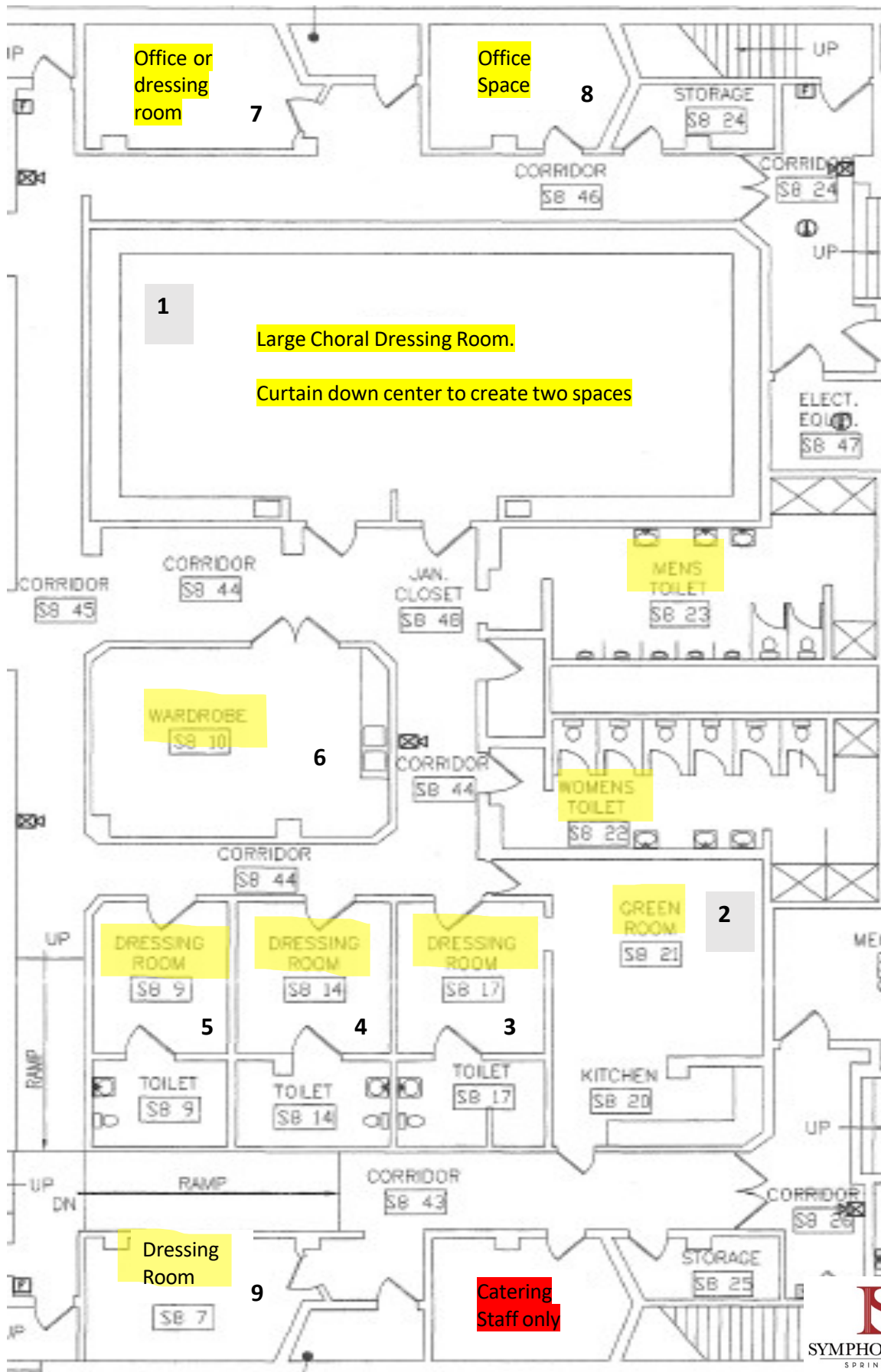
**Green Room:**

- 2 - couches
- 2- end tables
- 1 -coffee table

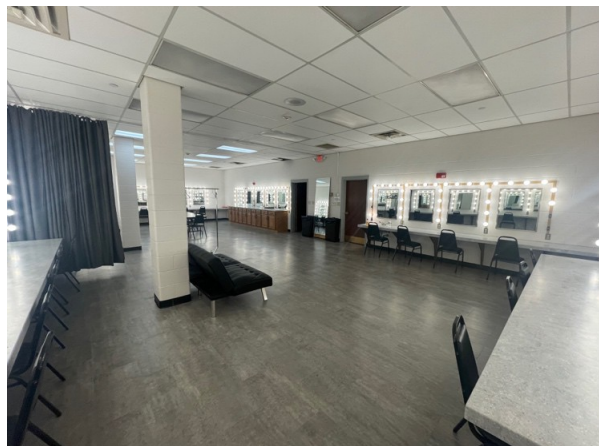
Kitchenette:

- 1 – Full sized refrigerator with freezer
- 1- Coffee maker – full pot and one cup
- 1 – Toaster
- 1 – Toaster oven





1) Large Choral Dressing room. Can be separated into two spaces by a curtain. 26 seated mirror spaces.



2) Green Room with kitchenette



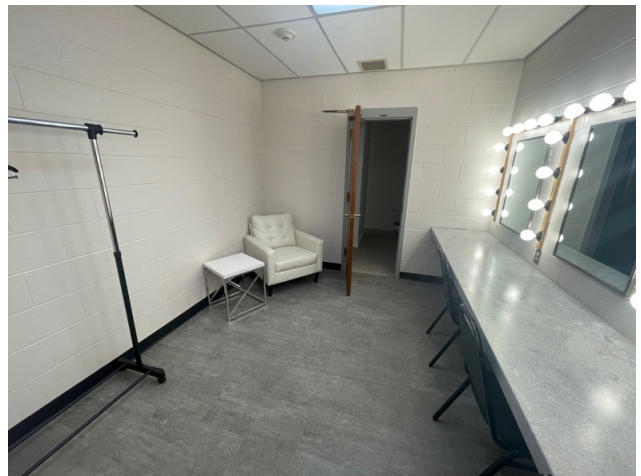
3, 4, & 5 Private locking dressing rooms with bathroom w/ shower. Each room has 3 seats with mirrors. Furniture may vary. Rolling racks available for all dressing rooms.

Room 3 is connected to green room by lockable door.

Rooms 4 & 5



Each room has a private bathroom with shower



6) Wardrobe room – Full sized wash & dryer and ice machine.



7) Stand-alone dressing room or production office.



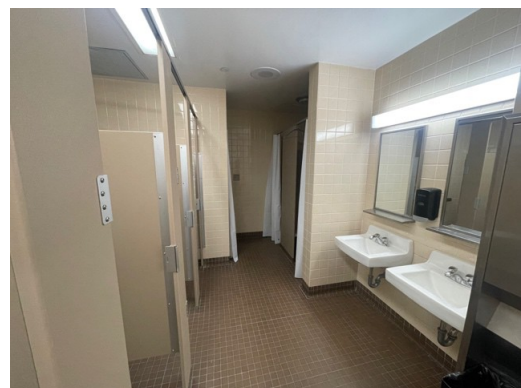
8) Production office space – to be painted



9) Stand-alone dressing room space.



Men's & Women's Restrooms with 3 showers each



| Channel | Pos | U# | Inst Type & Access & Load | Purpose | Clr & Gbo | Dm | Addr |
|-------------|-------------|----|---|---------|-----------|----|------|
| (1) | Loge HR3 | 2 | ETC Source4 10deg 750W 750w | Special | | | 1/23 |
| (2) | Loge HR3 | 3 | ETC Source4 10deg 750W 750w | Special | | | 1/25 |
| (3) | Loge HR2 | 2 | ETC Source4 10deg 750W 750w | Special | | | 1/31 |
| (4) | Loge HR2 | 3 | ETC Source4 10deg 750W 750w | Special | | | 1/32 |
| (5) | Loge HR1 | 2 | ETC Source4 10deg 750W 750w | Special | | | 1/39 |
| (6) | Loge HR1 | 3 | ETC Source4 10deg 750W 750w | Special | | | 1/40 |
| (7) | Loge HL1 | 2 | ETC Source4 10deg 750W 750w | Special | | | 1/69 |
| (8) | Loge HL1 | 3 | ETC Source4 10deg 750W 750w | Special | | | 1/73 |
| (9) | Loge HL2 | 2 | ETC Source4 10deg 750W 750w | Special | | | 1/61 |
| (10) | Loge HL2 | 3 | ETC Source4 10deg 750W 750w | Special | | | 1/62 |
| (11) | Loge HL3 | 2 | ETC Source4 10deg 750W 750w | Special | | | 1/58 |
| (12) | Loge HL3 | 3 | ETC Source4 10deg 750W 750w | Special | | | |
| (81) | 10 | 1 | ETC Pro Four-Cell Pendant 37deg 100w | | | | 7/1 |
| (82) | 10 | 2 | ETC Pro Four-Cell Pendant 37deg 100w | | | | 7/2 |
| (83) | 10 | 3 | ETC Pro Four-Cell Pendant 37deg 100w | | | | 7/3 |
| (84) | 10 | 4 | ETC Pro Four-Cell Pendant 37deg 100w | | | | 7/4 |
| (85) | 10 | 5 | ETC Pro Four-Cell Pendant 37deg 100w | | | | 7/5 |

| Channel | Pos | U# | Inst Type & Access & Load | Purpose | Clr & Gbo | Dm | Addr |
|--------------|--------------|----|---|---------|-----------|----|-------|
| (86) | 10 | 6 | ETC Pro Four-Cell Pendant 37deg 100w | | | | 7/6 |
| (87) | 10 | 7 | ETC Pro Four-Cell Pendant 37deg 100w | | | | 7/7 |
| (88) | 10 | 8 | ETC Pro Four-Cell Pendant 37deg 100w | | | | 7/8 |
| (89) | A | 1 | ETC Pro Four-Cell Pendant 37deg 100w | | | | 7/9 |
| (90) | A | 2 | ETC Pro Four-Cell Pendant 37deg 100w | | | | 7/10 |
| (91) | A | 3 | ETC Pro Four-Cell Pendant 37deg 100w | | | | 7/11 |
| (92) | A | 4 | ETC Pro Four-Cell Pendant 37deg 100w | | | | 7/12 |
| (93) | A | 5 | ETC Pro Four-Cell Pendant 37deg 100w | | | | 7/13 |
| (94) | A | 6 | ETC Pro Four-Cell Pendant 37deg 100w | | | | 7/14 |
| (95) | A | 7 | ETC Pro Four-Cell Pendant 37deg 100w | | | | 7/15 |
| (96) | A | 8 | ETC Pro Four-Cell Pendant 37deg 100w | | | | 7/16 |
| (101) | Balc Rail | 1 | High End Systems SolaFrame 1000 Ultra Bright 1.5kW | | | | 2/1 |
| (102) | Balc Rail | 2 | High End Systems SolaFrame 1000 Ultra Bright 1.5kW | | | | 2/49 |
| (103) | Balc Rail | 3 | High End Systems SolaFrame 1000 Ultra Bright 1.5kW | | | | 2/97 |
| (104) | Balc Rail | 4 | High End Systems SolaFrame 1000 Ultra Bright 1.5kW | | | | 2/145 |
| (105) | Balc Rail | 5 | High End Systems SolaFrame 1000 Ultra Bright 1.5kW | | | | 2/193 |
| (106) | Balc Rail | 6 | High End Systems SolaFrame 1000 Ultra Bright 1.5kW | | | | 2/241 |

| Channel | Pos | U# | Inst Type & Access & Load | Purpose | Clr & Gbo | Dm | Addr |
|--------------|--------------|----|---|---------|-----------|----|-------|
| (107) | Balc Rail | 7 | High End Systems SolaFrame 1000 Ultra Bright 1.5kW | | | | 2/289 |
| (108) | Balc Rail | 8 | High End Systems SolaFrame 1000 Ultra Bright 1.5kW | | | | 2/337 |
| (109) | Balc Rail | 9 | High End Systems SolaFrame 1000 Ultra Bright 1.5kW | | | | 2/385 |
| (111) | Loge HR3 | 1 | High End Systems SolaFrame 1000 Ultra Bright 1.5kW | | | | 3/401 |
| (112) | Loge HR2 | 1 | High End Systems SolaFrame 1000 Ultra Bright 1.5kW | | | | 3/1 |
| (113) | Loge HR1 | 1 | High End Systems SolaFrame 1000 Ultra Bright 1.5kW | | | | 3/49 |
| (114) | Loge HL1 | 1 | High End Systems SolaFrame 1000 Ultra Bright 1.5kW | | | | 3/193 |
| (115) | Loge HL2 | 1 | High End Systems SolaFrame 1000 Ultra Bright 1.5kW | | | | 3/145 |
| (116) | Loge HL3 | 1 | High End Systems SolaFrame 1000 Ultra Bright 1.5kW | | | | 3/97 |
| (201) | F | 1 | High End Systems Sola Wash LED 19 Standard 380w | | | | 4/1 |
| (202) | F | 2 | High End Systems Sola Wash LED 19 Standard 380w | | | | 4/22 |
| (203) | F | 3 | High End Systems Sola Wash LED 19 Standard 380w | | | | 4/43 |
| (204) | F | 4 | High End Systems Sola Wash LED 19 Standard 380w | | | | 4/64 |
| (205) | F | 5 | High End Systems Sola Wash LED 19 Standard 380w | | | | 4/85 |
| (211) | E | 1 | High End Systems Sola Wash LED 19 Standard 380w | | | | 4/106 |
| (212) | E | 2 | High End Systems Sola Wash LED 19 Standard 380w | | | | 4/127 |
| (213) | E | 3 | High End Systems Sola Wash LED 19 Standard 380w | | | | 4/148 |

| Channel | Pos | U# | Inst Type & Access & Load | Purpose | Clr & Gbo | Dm | Addr |
|--------------|-----|----|--|-----------------------------|-----------|----|-------|
| (214) | E | 4 | High End Systems Sola Wash LED 19 Standard 380w | | | | 4/169 |
| (221) | C | 1 | High End Systems Sola Wash LED 19 Standard 380w | | | | 4/190 |
| (222) | C | 3 | High End Systems Sola Wash LED 19 Standard 380w | | | | 4/211 |
| (223) | C | 4 | High End Systems Sola Wash LED 19 Standard 380w | | | | 4/232 |
| (224) | C | 6 | High End Systems Sola Wash LED 19 Standard 380w | | | | 4/253 |
| (225) | C | 7 | High End Systems Sola Wash LED 19 Standard 380w | | | | 4/274 |
| (226) | C | 9 | High End Systems Sola Wash LED 19 Standard 380w | | | | 4/295 |
| (301) | C | 2 | Protron 3000 8ch 900w | | | | 4/316 |
| (302) | C | 5 | Protron 3000 8ch 900w | | | | 4/324 |
| (303) | C | 8 | Protron 3000 8ch 900w | | | | 4/332 |
| (500) | | | Relay | Sola Frame Balcony Power | | | 1/18 |
| | | | " | " | | | 1/17 |
| | | | " | " | | | 1/14 |
| | | | " | " | | | 1/13 |
| | | | " | " | | | 1/10 |
| | | | " | " | | | 1/9 |
| | | | " | " | | | 1/6 |
| | | | " | " | | | 1/5 |
| | | | " | " | | | 1/2 |
| | | | " | " | | | 1/1 |

| Channel | Pos | U# | Inst Type & Access & Load | Purpose | Clr & Gbo | Dm | Addr |
|--------------|-----|----|---------------------------|-----------------------|-----------|----|-------|
| (501) | | | Relay | Sola Frame Loge Power | | | 1/68 |
| | | | " | " | | | 1/67 |
| | | | " | " | | | 1/60 |
| | | | " | " | | | 1/59 |
| | | | " | " | | | 1/52 |
| | | | " | " | | | 1/51 |
| | | | " | " | | | 1/38 |
| | | | " | " | | | 1/37 |
| | | | " | " | | | 1/30 |
| | | | " | " | | | 1/29 |
| | | | " | " | | | 1/22 |
| | | | " | " | | | 1/21 |
| (502) | | | Relay | Sola Wash Power | | | 1/114 |
| | | | " | " | | | 1/113 |
| | | | " | " | | | 1/112 |
| | | | " | " | | | 1/111 |
| | | | " | " | | | 1/110 |
| | | | " | " | | | 1/109 |
| | | | " | " | | | 1/106 |
| | | | " | " | | | 1/105 |
| | | | " | " | | | 1/104 |
| | | | " | " | | | 1/103 |
| | | | " | " | | | 1/102 |
| | | | " | " | | | 1/101 |
| | | | " | " | | | 1/100 |
| | | | " | " | | | 1/99 |
| | | | " | " | | | 1/98 |
| | | | " | " | | | 1/97 |

| Channel | Pos | U# | Inst Type & Access & Load | Purpose | Clr & Gbo | Dm | Addr |
|--------------|-----|----|---------------------------|-----------------|-----------|----|-------|
| (503) | | | Relay | Pendant Power | | | 1/134 |
| | | | " | " | | | 1/133 |
| | | | " | " | | | 1/132 |
| | | | " | " | | | 1/131 |
| (504) | | | Relay | Overstage Power | | | 1/206 |
| | | | " | " | | | 1/205 |
| | | | " | " | | | 1/184 |
| | | | " | " | | | 1/183 |
| | | | " | " | | | 1/160 |
| | | | " | " | | | 1/159 |
| | | | " | " | | | 1/148 |
| | | | " | " | | | 1/147 |
| (505) | | | Relay | Floor Power | | | 1/250 |
| | | | " | " | | | 1/249 |
| | | | " | " | | | 1/248 |
| | | | " | " | | | 1/247 |

| Channel | Pos | U# | Inst Type & Access & Load | Purpose | Clr & Gbo | Dm | Addr |
|--------------|-----|----|---------------------------|-----------------------|-----------|----|-------|
| (501) | | | Relay | Sola Frame Loge Power | | | 1/68 |
| | | | " | " | | | 1/67 |
| | | | " | " | | | 1/60 |
| | | | " | " | | | 1/59 |
| | | | " | " | | | 1/52 |
| | | | " | " | | | 1/51 |
| | | | " | " | | | 1/38 |
| | | | " | " | | | 1/37 |
| | | | " | " | | | 1/30 |
| | | | " | " | | | 1/29 |
| | | | " | " | | | 1/22 |
| | | | " | " | | | 1/21 |
| | | | " | " | | | 1/21 |
| (502) | | | Relay | Sola Wash Power | | | 1/114 |
| | | | " | " | | | 1/113 |
| | | | " | " | | | 1/112 |
| | | | " | " | | | 1/111 |
| | | | " | " | | | 1/110 |
| | | | " | " | | | 1/109 |
| | | | " | " | | | 1/106 |
| | | | " | " | | | 1/105 |
| | | | " | " | | | 1/104 |
| | | | " | " | | | 1/103 |
| | | | " | " | | | 1/102 |
| | | | " | " | | | 1/101 |
| | | | " | " | | | 1/100 |
| | | | " | " | | | 1/99 |
| | | | " | " | | | 1/98 |
| | | | " | " | | | 1/97 |

| Channel | Pos | U# | Inst Type & Access & Load | Purpose | Clr & Gbo | Dm | Addr |
|--------------|-----|----|---------------------------|-----------------|-----------|----|-------|
| (503) | | | Relay | Pendant Power | | | 1/134 |
| | | | " | " | | | 1/133 |
| | | | " | " | | | 1/132 |
| | | | " | " | | | 1/131 |
| (504) | | | Relay | Overstage Power | | | 1/206 |
| | | | " | " | | | 1/205 |
| | | | " | " | | | 1/184 |
| | | | " | " | | | 1/183 |
| | | | " | " | | | 1/160 |
| | | | " | " | | | 1/159 |
| | | | " | " | | | 1/148 |
| | | | " | " | | | 1/147 |
| (505) | | | Relay | Floor Power | | | 1/250 |
| | | | " | " | | | 1/249 |
| | | | " | " | | | 1/248 |
| | | | " | " | | | 1/247 |

Springfield Symphony Hall Non-EOS Console Connection Guide

- Symphony Hall uses industry standard sACN (streaming architectural control network) to control distributed DMX Gateways.
- Symphony Hall uses a lighting control network that resides in the 10.101.x.x. IP range with a subnet mask of 255.255.0.0
- If you plan on controlling our network with your console make sure that your console resides in the 10.101.200.x IP Range
- Make sure that you are sending sACN universes 1 – 4 to the correct network port on your console.
- Once you are patched the house technician will provide a network cable for you to control our universes.
- Symphony Hall Fixtures are powered by relays the must be “Parked” on for the duration of the show.
- A list of these relays in Universe 1 (House Channels 500 – 505) can be found on the channel hookup that will be provided by your house technician.

grandMA 2 connection guide

[Network DMX: Using sACN with grandMA2 | ACT Entertainment Customer Hub \(actlighting.com\)](#)

Hog connection guide

[How to Configure sACN Output on the Hog 4 Console - Electronic Theatre Controls Inc \(etcconnect.com\)](#)

Chamsys Magic Q connection guide

49.4.1 section at this link [Chapter 49. Settings \(chamsys.co.uk\)](#)

Avo lights connection guide

[DMX Output Mapping | Avolites Manual](#)